

Light efficiency:

42 Lumen/Watt

Light quality:

CRI: 97.7

Color temperature:

3139 K

Output: 13035 lm

Peak: 194173 cd

Power: 307 W

PF: 1.0



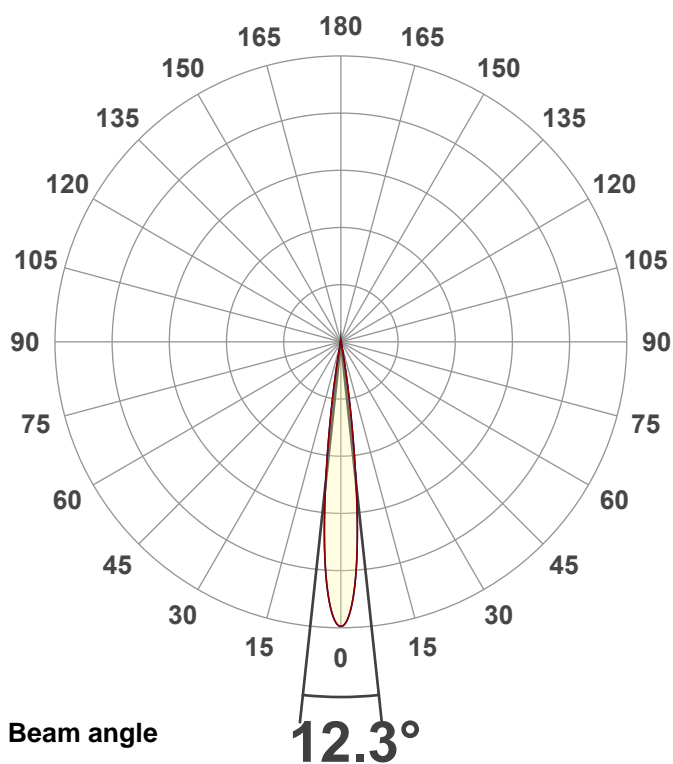
Product name:

PAR Z300 3K (Zoom 15°, Full On)

Item number:

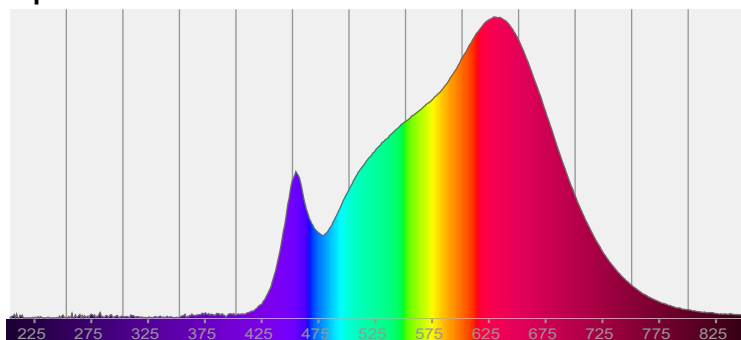
Date and time:

8/16/2025 11:34:47 AM



CIE 1931
x: 0.428
y: 0.401

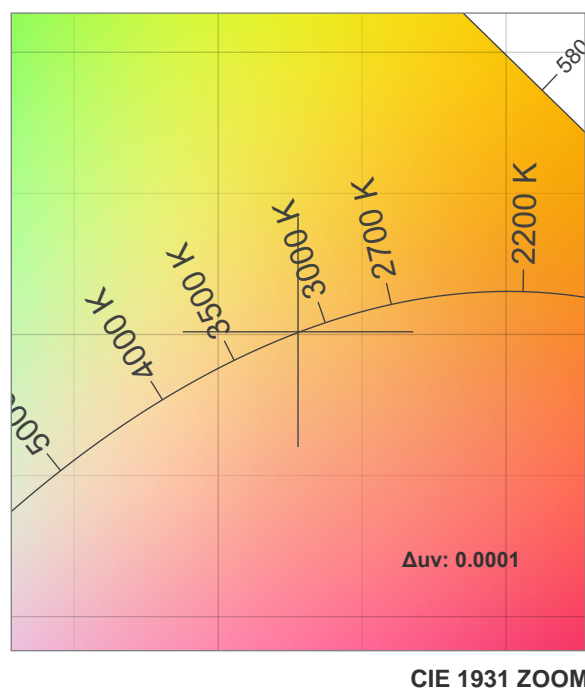
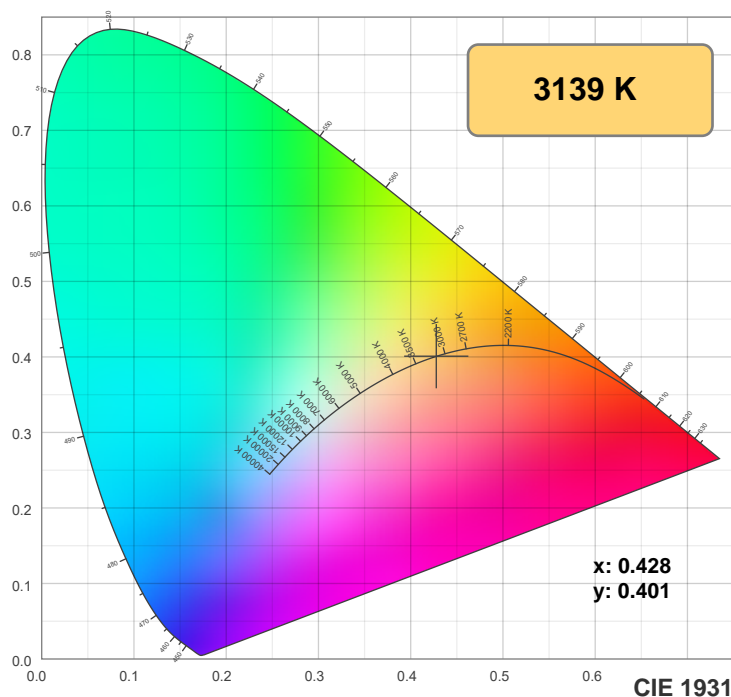
Spectra



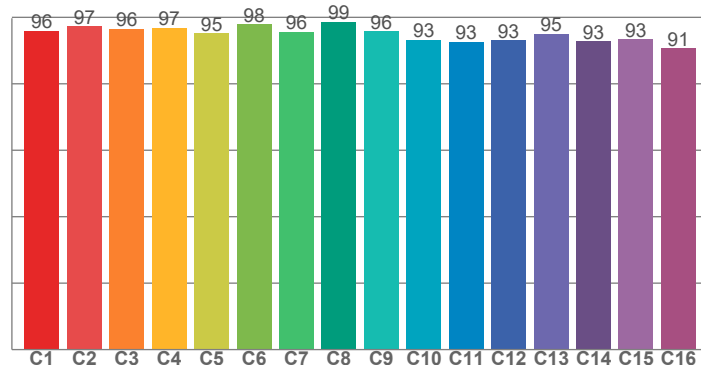
Power

Voltage: 117 V
Current: 2.62 A
Frequency: 0 Hz

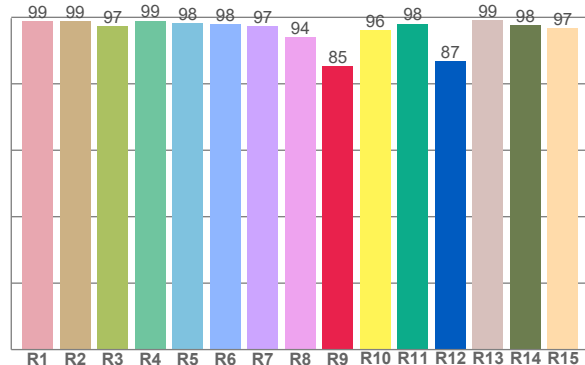
Color details



TM-30: 95.2



CRI: 97.7 (R1-R8)



CRI R values, only R1-R8 are used to calculate final CRI value

R1	R2	R3	R4	R5	R6	R7	R8	R9	R10	R11	R12	R13	R14	R15
98.8	98.9	97.4	99.0	98.3	97.8	97.3	94.0	85.4	96.3	98.1	86.9	99.0	97.8	96.7

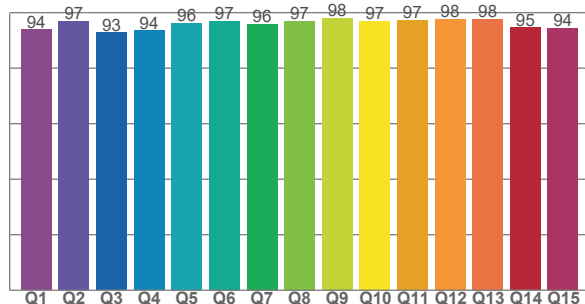
TM30 C values, 16 binned values out of total of 99 C values

C1	C2	C3	C4	C5	C6	C7	C8	C9	C10	C11	C12	C13	C14	C15	C16
95.9	97.4	96.5	96.9	95.2	97.8	95.7	98.7	95.9	93.2	92.6	93.0	95.1	92.7	93.4	90.7

CQS Q values

Q1	Q2	Q3	Q4	Q5	Q6	Q7	Q8	Q9	Q10	Q11	Q12	Q13	Q14	Q15
94.0	97.0	92.9	93.5	96.2	97.0	95.8	97.0	98.0	97.0	97.4	97.7	97.6	94.7	94.4

CQS: 95.5



Color parameters

Color temperature	Color rendering index	Red component	Color fidelity	Color gamut	Color quality scale	Color coordinate cie 1931	Color coordinate cie 1931	Color coordinate	Color coordinate	Color deviation from black body
CCT	CRI	CRI R9	TM30 Rf	TM30 Rg	CQS	x	y	u	v	Δuv
3139 K	97.7	85.4	95.2	100.3	95.5	0.428	0.401	0.246	0.346	0.0001

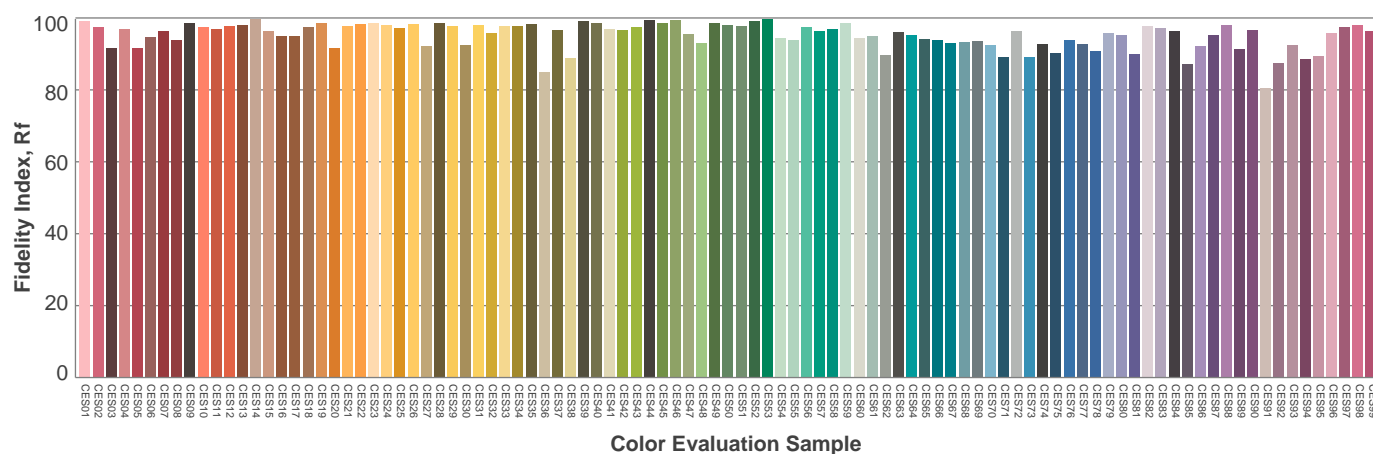
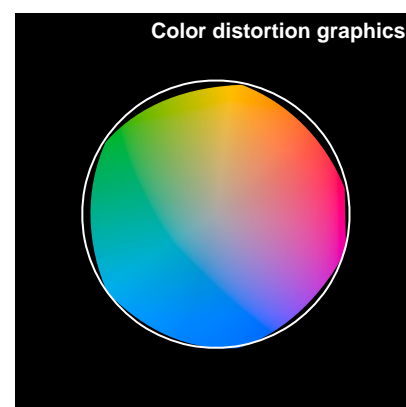
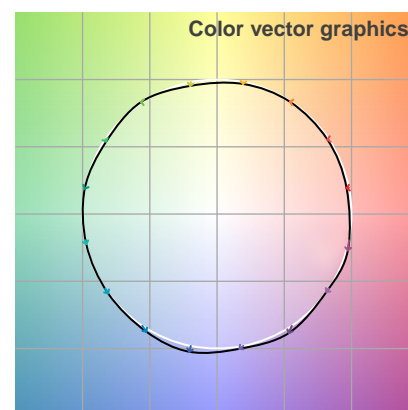
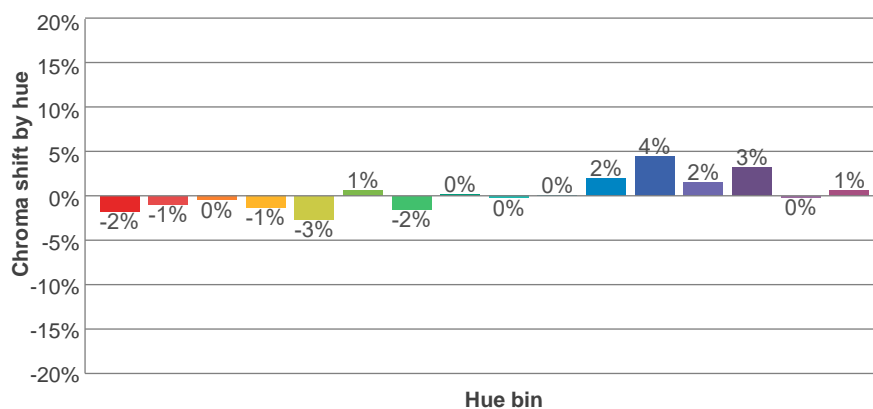
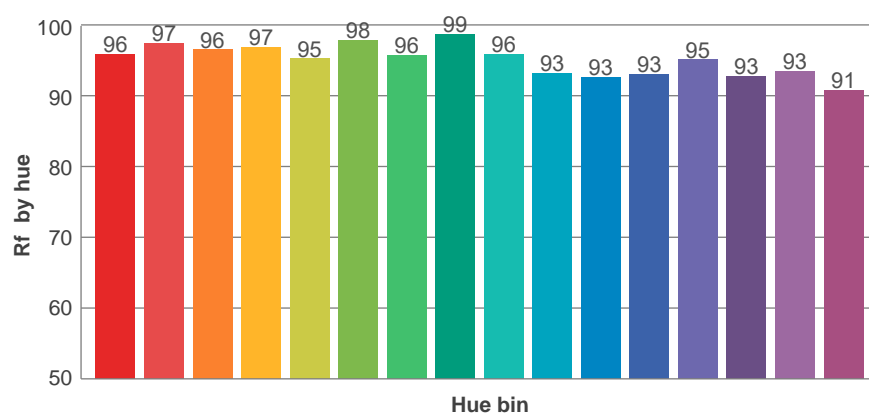
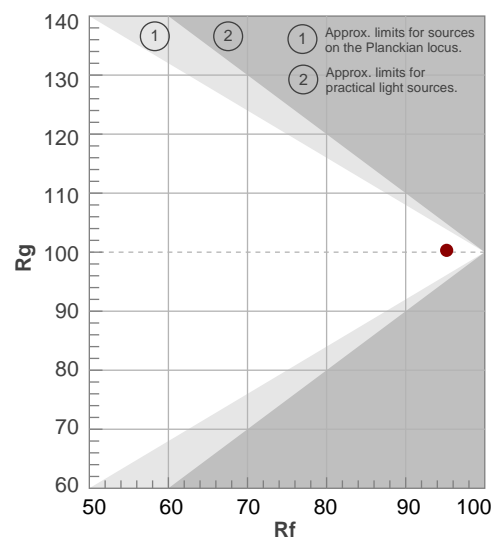
Rf 95.2

Fidelity index R_f

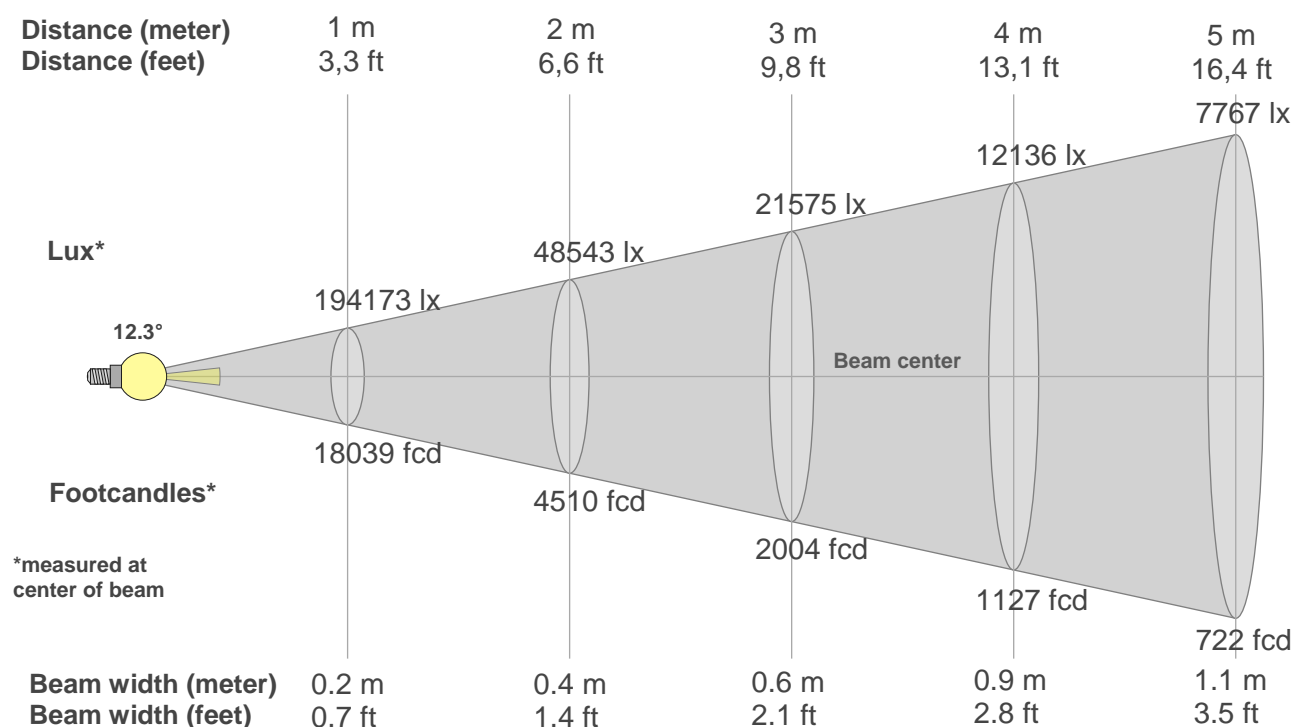
Rg 100.3

Gamut index Rg

		Shifts (%)	
Hue Bin	R_t	Chroma	Hue
1	96	-2%	0%
2	97	-1%	0%
3	96	0%	1%
4	97	-1%	0%
5	95	-3%	1%
6	98	1%	1%
7	96	-2%	1%
8	99	0%	1%
9	96	0%	3%
10	93	0%	4%
11	93	2%	5%
12	93	4%	0%
13	95	2%	-3%
14	93	3%	-5%
15	93	0%	-3%
16	91	1%	-8%



Beam details



Beam intensities from 1-20m

1m	2m	3m	4m	5m	6m	7m	8m	9m	10m	11m	12m	13m	14m	15m	16m	17m	18m	19m	20m
3.3ft	6.6ft	9.8ft	13.1ft	16.4ft	19.7ft	23ft	26.2ft	29.5ft	32.8ft	36.1ft	39.4ft	42.7ft	45.9ft	49.2ft	52.5ft	55.8ft	59.1ft	62.3ft	65.6ft
194173lx	48543lx	21575lx	12136lx	7767lx	5394lx	3963lx	3034lx	2397lx	1942lx	1605lx	1348lx	1149lx	991lx	863lx	758lx	672lx	599lx	538lx	485lx
18039.2 fcd	4509.8 fcd	2004.4 fcd	1127.5 fcd	721.6 fcd	501.1 fcd	368.1 fcd	281.9 fcd	222.7 fcd	180.4 fcd	149.1 fcd	125.3 fcd	106.7 fcd	92 fcd	80.2 fcd	70.5 fcd	62.4 fcd	55.7 fcd	50 fcd	45.1 fcd

Intensities in 0° c-plane

0°	1°	2°	3°	4°	5°	6°	7°	8°	9°	10°	11°	12°	13°	14°	15°	16°	17°	18°	19°
194k	192k	184k	171k	153k	129k	101k	72k	47k	27k	14k	6k	3k	1k	1k	1k	1k	1k	0k	0k
100%	99%	95%	88%	79%	66%	52%	37%	24%	14%	7%	3%	1%	1%	0%	0%	0%	0%	0%	0%

Intensities in 90° c-plane

0°	1°	2°	3°	4°	5°	6°	7°	8°	9°	10°	11°	12°	13°	14°	15°	16°	17°	18°	19°
194k	192k	184k	171k	153k	129k	101k	72k	47k	27k	14k	6k	3k	1k	1k	1k	1k	1k	0k	0k
100%	99%	95%	88%	79%	66%	52%	37%	24%	14%	7%	3%	1%	1%	0%	0%	0%	0%	0%	0%

Intensities in 180° c-plane

0°	1°	2°	3°	4°	5°	6°	7°	8°	9°	10°	11°	12°	13°	14°	15°	16°	17°	18°	19°
194k	192k	184k	171k	153k	129k	101k	72k	47k	27k	14k	6k	3k	1k	1k	1k	1k	1k	0k	0k
100%	99%	95%	88%	79%	66%	52%	37%	24%	14%	7%	3%	1%	1%	0%	0%	0%	0%	0%	0%

Intensities in 270° c-plane

0°	1°	2°	3°	4°	5°	6°	7°	8°	9°	10°	11°	12°	13°	14°	15°	16°	17°	18°	19°
194k	192k	184k	171k	153k	129k	101k	72k	47k	27k	14k	6k	3k	1k	1k	1k	1k	1k	0k	0k
100%	99%	95%	88%	79%	66%	52%	37%	24%	14%	7%	3%	1%	1%	0%	0%	0%	0%	0%	0%

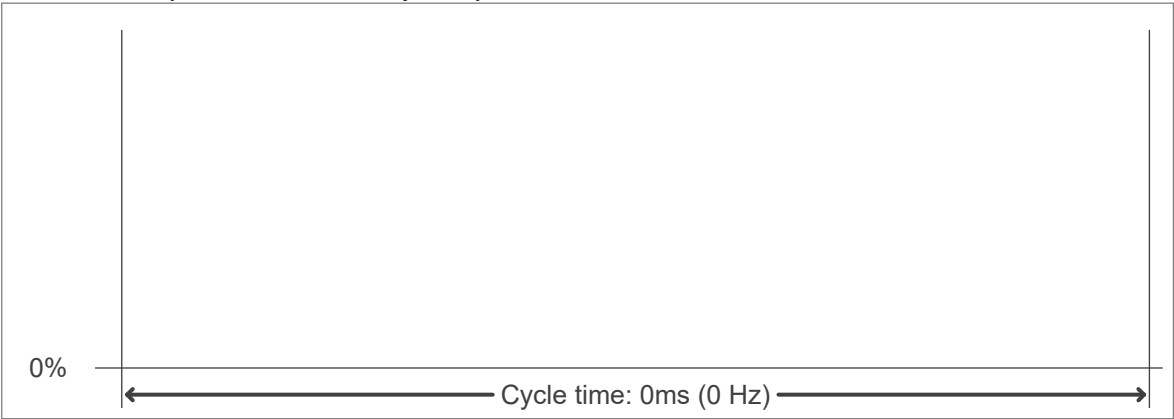
Beam angle 50%	Field angle 10%	Cutoff angle 2,5%	Intensity ratio in 120° cone	Intensity ratio in 90° cone
12.3°	19.1°	22.6°	74.0%	69.9%



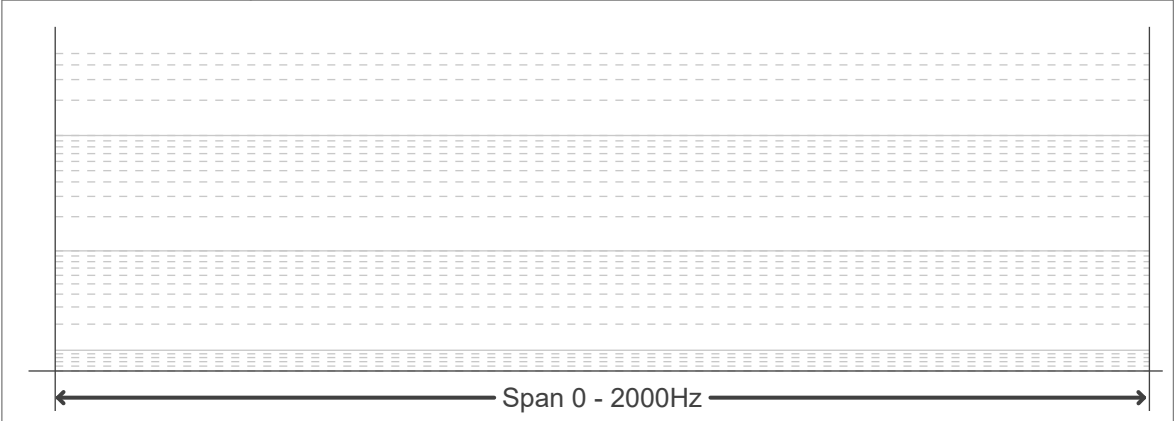
Flicker curve (complete sampled flicker signal)



Flicker frame (frame of one flicker period)



Flicker FFT (frequency scope of flicker curve)



Flicker results:

Flicker frequency:		n/a Hz	
Flicker index:	n/a	JA8/10 40Hz	n/a %
Flicker percentage:	n/a %	JA8/10 90Hz	n/a %
SVM: (Visual flicker)	n/a	JA8/10 200Hz	n/a %
PstLM	n/a	JA8/10 400Hz	n/a %
Mp	n/a	JA8/10 1000Hz	n/a %

Flicker conditions:

Sample rate:	n/a samples/second
--------------	--------------------